

KD-C17-1/2 Series

경량형 정밀우레탄 - Light loads Precision polyurethane

KD-C17-1: Steel / KD-C17-2: STS



- 허용 하중 Allowable load
300~390Kg/4ea
- 사용 온도 Temperature
-10 ~ 90° C

표기법 - Ordering Code

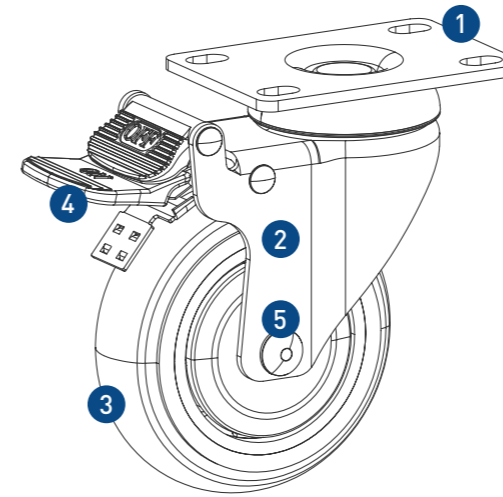
KD-C17	1	100	SF	B
Caster Series	Function No. 1 : Steel 2 : STS	Serial Number	• SF : Swivel Flange • RF : Rigid Flange • SS : Swivel Stem	• B : Brake

특징 - Features

- 무소음, 바닥손상이 없음
No noise, no floor damage
- 이중 Ball race way 구조
Double ball race way construction
- 구름성, 선회력 우수
Excellent rotatory, turning performance

용도 - Application

- 경량형 운반대 및 카트
Lightweight transporter and cart
- 의료기기 및 병원용 침대
Bed for medical equipment and hospital



재질 & 표면처리 - Material & Treatment

NO.	재질	표면처리
① 상판(Top Plate)	SPC (STS)	Zinc Plating (MFZN) (-)
② 몸체(Body)	SPC (STS)	Zinc Plating (MFZN) (-)
③ 바퀴(Wheel)	Poly Urethane + PC	Transparent
④ 브레이크(Brake)	TPA	Light Gray
⑤ 핀(Pin)	Swrch10A/S45C (STS)	Zinc Plating (MFZN) (-)

규격 - Dimension

KD-C17-1: Steel / KD-C17-2: STS

Unit: mm

Model	자중 (Net Weight) Kg	Kg		W		HOLE			H			M		Y
		1EA	4EA	Ø	W	F	F1	Hole	H	L	O	M	Y	
KD-C17-1(2)-75SF	0.69	100	300	Ø75	34	95x65	73x44.5	Ø9x13 (slot hole)	108	125	40	-	-	
KD-C17-1(2)-75SFB	0.77									155	40			
KD-C17-1(2)-75RF	0.48									95	-			
KD-C17-1(2)-75SS	0.6								112.8	107.5	40	M12	30	
KD-C17-1(2)-75SSB	0.69									137.4	40			
KD-C17-1(2)-100SF	0.82	110	330	Ø100	34	95x65	73x44.5	Ø9x13 (slot hole)	134	134	36.5	-	-	
KD-C17-1(2)-100SFB	0.9									154.4	36.5			
KD-C17-1(2)-100RF	0.6									100	-			
KD-C17-1(2)-100SS	0.72								138.8	116.5	36.5	M12	30	
KD-C17-1(2)-100SSB	0.8									137	36.5			
KD-C17-1(2)-125SF	0.9	120	360	Ø125	34	95x65	73x44.5	Ø9x13 (slot hole)	158	148	38	-	-	
KD-C17-1(2)-125SFB	0.99									154.4	38			
KD-C17-1(2)-125RF	0.69									125	-			
KD-C17-1(2)-125SS	0.83								164.5	130.5	38	M16	30	
KD-C17-1(2)-125SSB	0.92									137	38			
KD-C17-1(2)-150SF	1.1	130	390	Ø150	34	95x65	73x44.5	Ø9x13 (slot hole)	186	159.2	36.7	-	-	
KD-C17-1(2)-150SFB	1.3									159.2	36.7			
KD-C17-1(2)-150RF	0.85									150	-			
KD-C17-1(2)-150SS	0.95								192.8	150	36.7	M16	30	
KD-C17-1(2)-150SSB	1.1									150	36.7			