

KC-101 캠 록 - Cam Lock

C-2

CAM LOCK, DIMPLE LOCK, MAGNET CATCH



- 특징**
- 2Point 잠김.
 - 진동에 강합니다.
 - 완전 방수 기능.
 - 좌, 우 별도입니다.
 - 쉬프트 백 기능으로 조작성이 우수합니다.

- 사양**
- 재질 : 본체, 열쇠 - 아연 합금(ZDCII)
커버 - 폴리 우레탄
 - 표면처리 : 본체 - 블랙 크롬 도금
열쇠 - 세티라이트 크롬 도금
 - 제품중량 : 78g

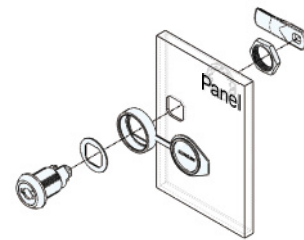
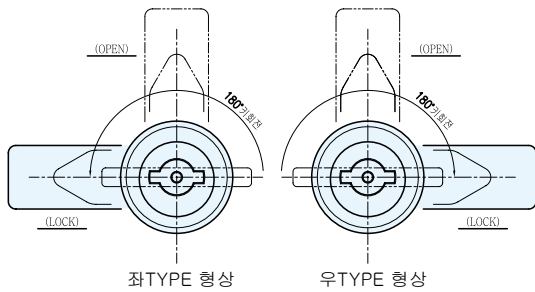
- 용도**
- 정보통신 장비, 반도체 장비, 분전반, 배전반, 제어반, 산업용 기계, 이화학기기, 시험기기 등.

- Features**
- 2-Point locked structure.
 - Resistant to vibration.
 - Waterproof.
 - Use separately right and left.
 - Excellent operability with shift back function.

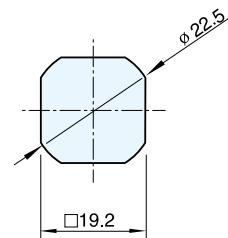
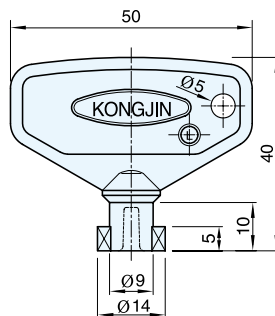
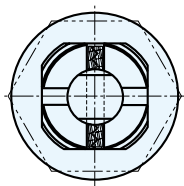
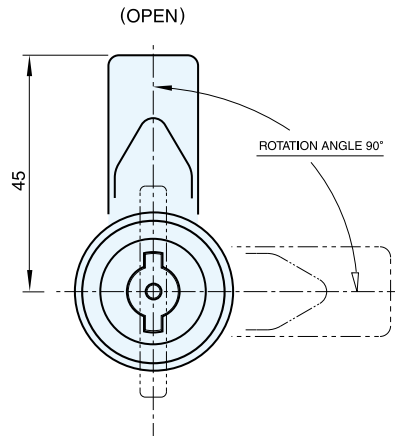
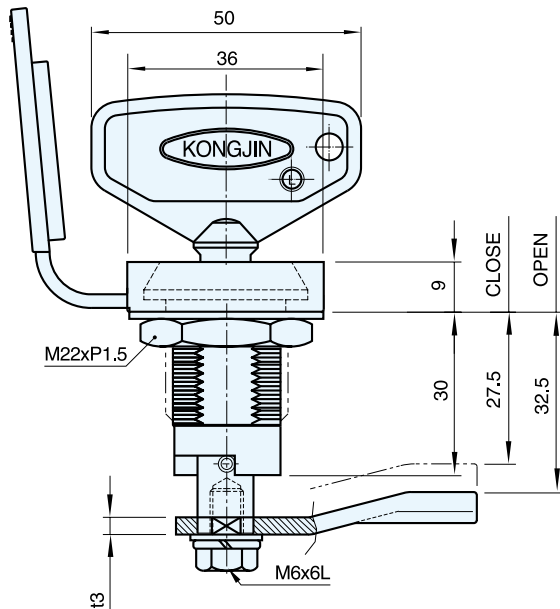
- Specification**
- Materials Used : Main frame and key - Zinc alloy(ZDCII),
Cover - Polyurethane
 - Finish : Main frame - Black chrome plating
Key - Satellite chrome plating
 - Weight : 78g

- Use**
- IT equipment, Semiconductor equipment, Incoming panel, Distributing panel, Control panel, Industrial machinery, Physico-chemistry instruments, Testing apparatus, etc.

※ 락핸들 페이지 참고(p.556-571) ※ Refer to the lock handle page (p.556-571)
 ※ 기본 락핸들 54번 사용 ※ Use the Lock Handle No. 54
 ※ 락핸들, 키, 방수커버 별도 판매 ※ Separate purchase : Lock Handle, Key, Waterproof Cover



Installation Method



Panel Drilling Dimensions

	코드번호	규격
KC-101-B	KC00005	좌
KC-101-B	KC00006	우