

KA-75 매립형 핸들 - Embedded Pulls



특징

- 돌출을 최소화하여 협소한 장소에서 사용이 용이합니다.

사양

- 재질 : 아연 합금(ZDCII)
- 표면처리 : 세티라이트 크롬 도금
베로아 크롬 도금

용도

- 정보통신 장비, 반도체 장비, 분전반, 배전반, 제어반, 산업용 기계, 이화학기기, 시험기기 등.

Features

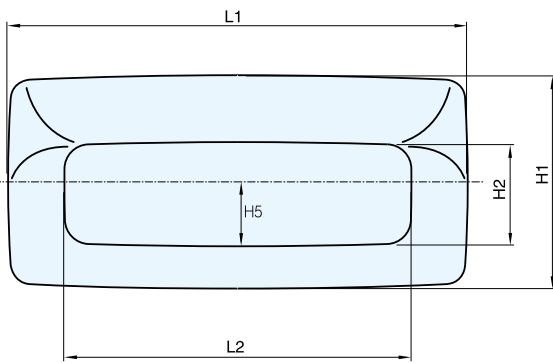
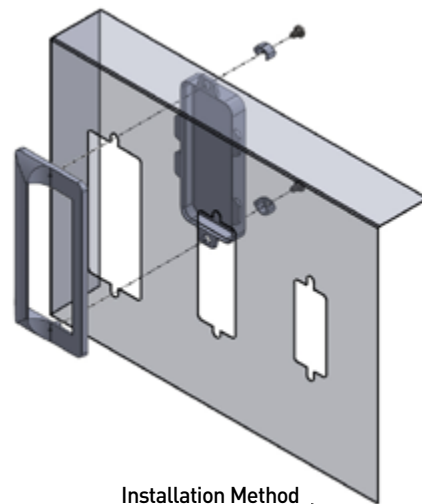
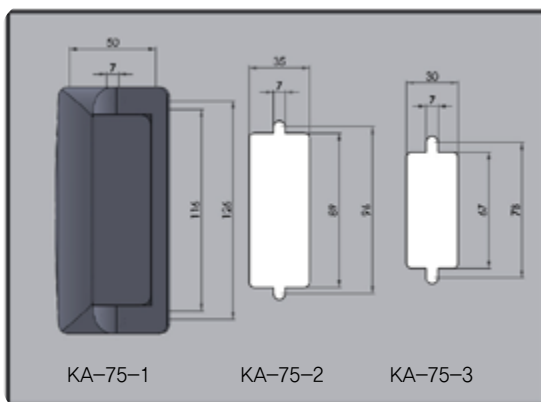
- This item is minimize protrusions for easy use in small areas.

Specification

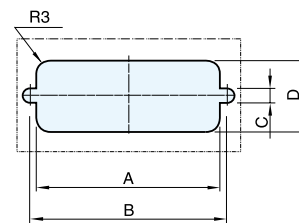
- Materials Used : Zinc alloy(ZDCII)
- Finish : Satellite chrome plating
Velour chrome plating

Use

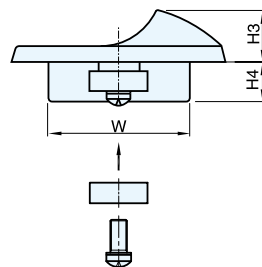
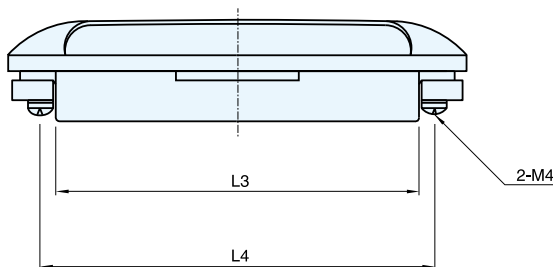
- IT equipment, Semiconductor equipment, Incoming pane, Distributing panel, Control panel, Industrial machinery, Physico-chemistry instruments, Testing apparatus, etc.



Installation Method



Panel Drilling Dimensions



	코드번호	L1	L2	L3	L4	H1	H2	H3	H4	H5	W	A	B	C	D	Net weight(g)
KA-75-1 3가	KA01592	142	110	115	126	65	34	12.5	11	22.5	49	116	126	7	50	165
KA-75-1C	KA00795	142	110	115	126	65	34	12.5	11	22.5	49	116	126	7	50	165
KA-75-2 3가	KA00799	112	84	88	96	52	25	12.5	9.5	15.5	33.5	89	96	7	35	71
KA-75-2C	KA00797	112	84	88	96	52	25	12.5	9.5	15.5	33.5	89	96	7	35	71
KA-75-3 3가	KA01593	92	63	66	78	43	21	11	8.5	13.5	29	67	78	7	30	55
KA-75-3C	KA00802	92	63	66	78	43	21	11	8.5	13.5	29	67	78	7	30	55