

# KC-134 사이드 바 캠록 - Side Bar Cam Lock

**C-40**

CAM LOCK, DIMPLE LOCK, MAGNET CATCH

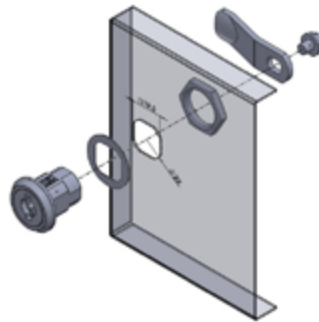


- 특징**
- 키 타입과 노브 타입이 있습니다.
- 사양**
- 재질 : 아연 합금(ZDCII)
  - 표면처리 : 블랙 도장, 세티라이트 도금
  - 제품중량 : KC-134-N : 91g  
KC-134-K : 80g
- 용도**
- 정보통신 장비, 반도체 장비, 분전반, 배전반, 제어반, 산업용 기계, 이화학기기, 시험기기 등.

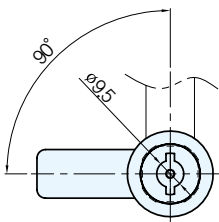
- Features**
- There are key and knob types.
- Specification**
- Materials Used : Zinc alloy(ZDCII)
  - Finish : Black painting, Satellite chrome plating
  - Weight : KC-134-N : 91g  
KC-134-K : 80g
- Use**
- IT equipment, Semiconductor equipment, Distributing panel, Control panel, Industrial machinery, Physico-chemistry instruments, Testing apparatus, etc.

※ 락핸들 페이지 참고(p.532~549)  
※ 기본 락핸들 65번 사용

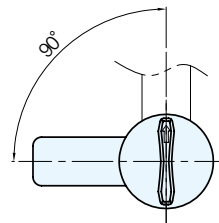
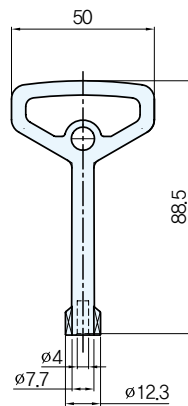
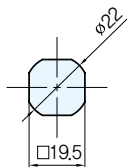
※ 락핸들 별도판매



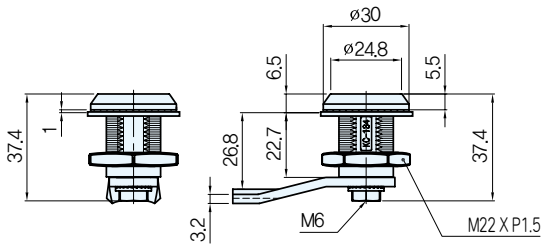
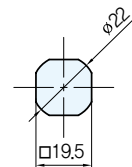
**Installation Method**



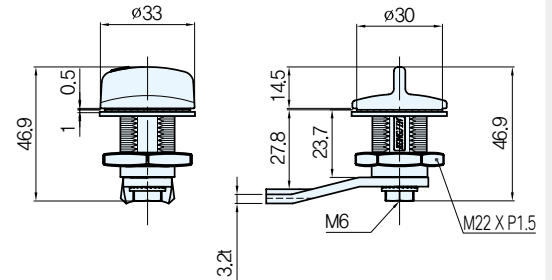
**Panel Drilling Dimensions**



**Panel Drilling Dimensions**



**KC-134-K**



**KC-134-N**

	코드번호
KC-134-K	KC00201
KC-134-N	KC00203