



## C-11 KC-106S 사이드 바 - Side Bar



- 특징**
- 1Point 잠김.
  - 회전각 좌,우 90°
  - 각 키 및 마스터 키 페이지 참조
  - 좌, 우 별도입니다.

- 사양**
- 재질 : 아연 합금(ZDCII)
  - 표면처리 : 크롬 도금(MZCr)  
베로아 크롬 도금
  - 제품중량 : 67g

- 용도**
- 자판기, ATM, 정보 단말기, 중요 시설 등.

- Features**
- 1-Point locked structure.
  - Rotation angle - right 90°, left 90°
  - Refer to page for individual keys and master keys.
  - Use separately right and left.

- Specification**
- Materials Used : Zinc alloy(ZDCII)
  - Finish : Chrome plating(MZCr)  
Velour chrome plating
  - Weight : 67g

- Use**
- Vending machine, ATM, Information terminal, Important facilities, etc.

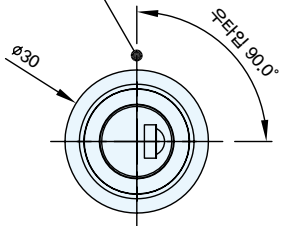
- ※ 락핸들 페이지 참고(p.556-571)
- ※ 기본 락핸들 48번 사용
- ※ 제품내 락핸들 포함

- ※ Refer to the lock handle page (p.556-571)
- ※ Use the Lock Handle No. 48
- ※ Includes lock handle in the product

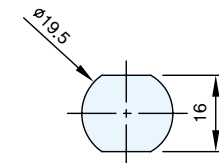
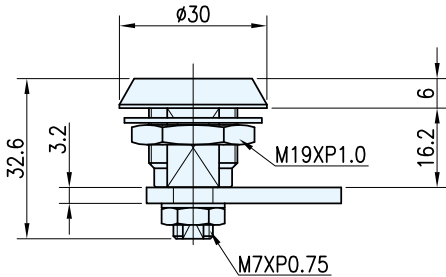
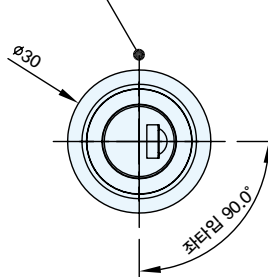
- ※ 손잡이(블랙) 별도 판매

- ※ Separate purchase : Handle(Black)

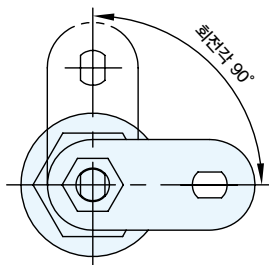
KEY IN / OUT POSITION



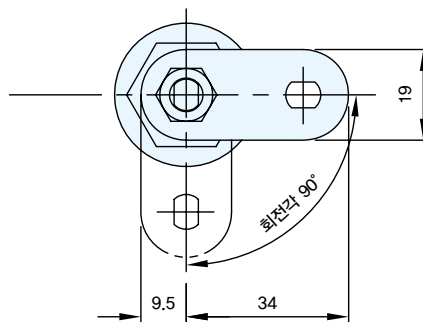
KEY IN / OUT POSITION



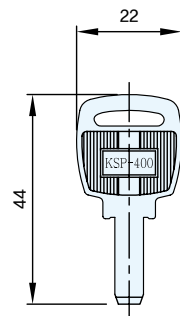
Panel Drilling Dimensions



KC-106SR  
RIGHT TYPE



KC-106SL  
LEFT TYPE



코드번호	
KC-106S	KC00113