

# KH-1038 슬립 조인트 힌지 - Slip Joint Hinge

B-4



**특징**

- 스테인레스 재질로 내식성, 내구성이 우수합니다.
- 용도에 맞게 다양한 선택을 할 수 있습니다.
- 볼트 부착용 및 용접용이 있습니다.
- 분리형 힌지.

**사양**

- 재질 : 스테인레스(STS304)
- 표면처리 : 광택 연마
- 제품중량 : 60g

**용도**

- 정보통신 장비, 계측기기, OA기기 등.

**Features**

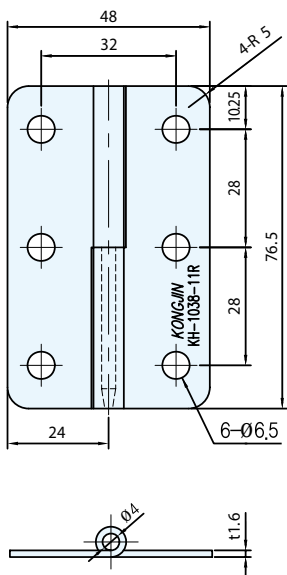
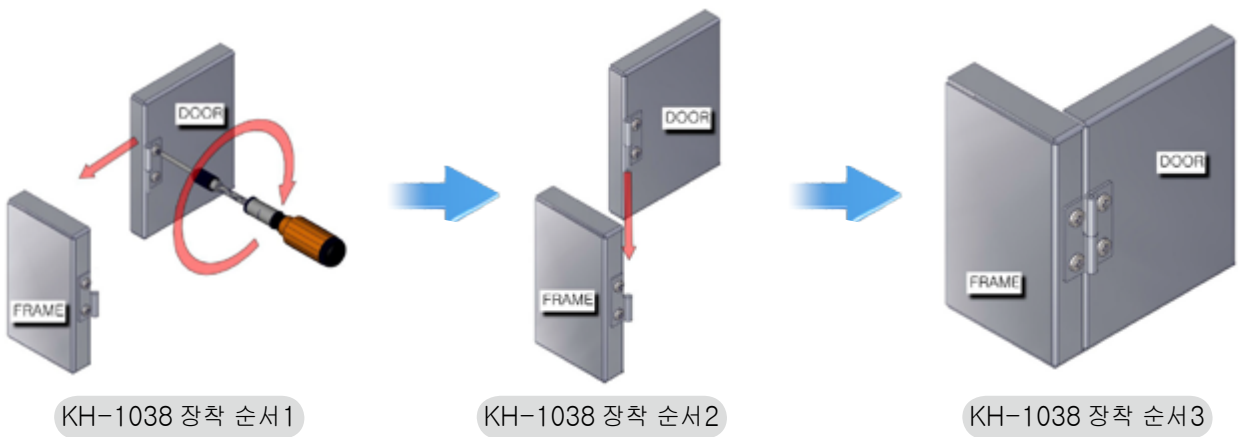
- Made of stainless steel for durability and corrosion resistance.
- Various options to select based on unique use.
- Bolt screw up type, welding type.
- Detachable hinge.

**Specification**

- Materials Used : Stainless(STS304)
- Finish : Satin polishing
- Weight : 60g

**Use**

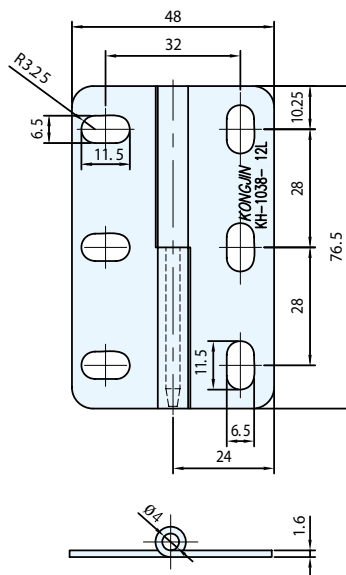
- IT equipment, Measuring instrument, OA equipment, etc.



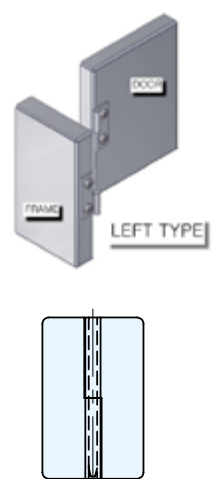
**KH-1038-11R**



**KH-1038-1R  
WITHOUT HOLE**



**KH-1038-12L**



**KH-1038-1L  
WITHOUT HOLE**

스테인레스(STS304)/t=1.5				
WITHOUT HOLE	KH-1038-1L	KH00031	KH-1038-1R	KH00032
WITH HOLE	KH-1038-11L	KH00027	KH-1038-11R	KH00028
	KH-1038-12L	KH00029	KH-1038-12R	KH00030