



## B-3 KH-1012 평 힌지 - Flat Hinge



**특징**

- 스테인레스 재질로 내식성, 내구성이 우수합니다.

**사양**

- 재질 : 스테인레스(STS430)
- 표면처리 : 광택 연마

**용도**

- 환경 시험기, 공작기계, 산업용 기계 등.

**Features**

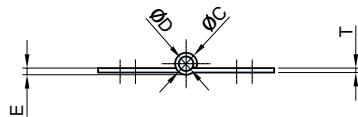
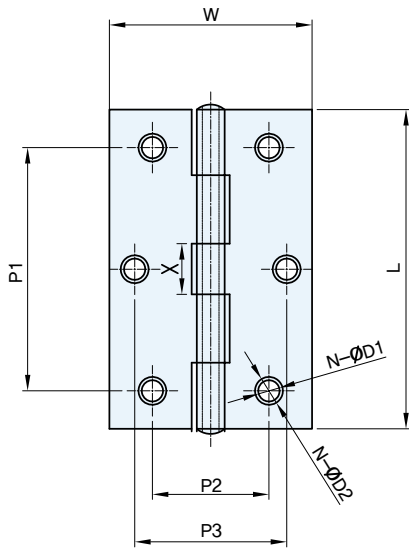
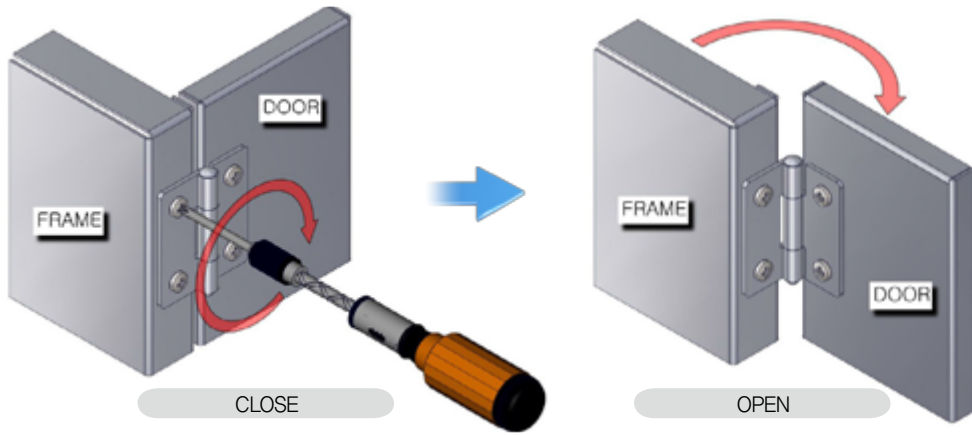
- Made of stainless steel for durability and corrosion resistance.

**Specification**

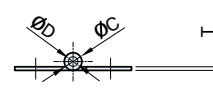
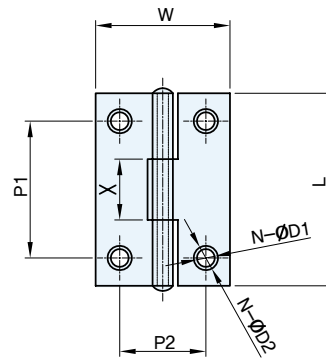
- Materials Used : Stainless(STS430)
- Finish : Satin polishing

**Use**

- Environmental testing equipment, Machine tool, Industrial machinery, etc.



**KH-1012-1~4**



**KH-1012-5**

	코드번호	L	W	C	D	E	P1	P2	P3	D1	D2	T	N	X	Net weight(g)
<b>KH-1012-1</b>	KH00017	89	56	7.5	5	1.5	69	32	40	5	7	1.2	6	5	70
<b>KH-1012-2</b>	KH00018	76	45.5	6	4	1.5	56	26	30	4.5	6	1	6	5	40
<b>KH-1012-3</b>	KH00019	63	40	5	3.3	1.5	48	23	30	4.2	5.5	1	6	5	21
<b>KH-1012-4</b>	KH00020	51	34.5	5	3.3	1.2	36	21	⊗	4	5.3	0.8	4	5	15
<b>KH-1012-5</b>	KH00021	38	26.5	4	2.2	⊗	27	16	⊗	3.5	4.8	0.8	4	3	8