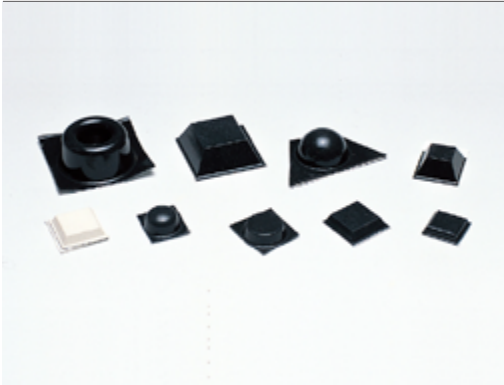


# KD-R166 고무 발 - Rubber Foot

D-16



**특징**

- 마찰계수가 높아 미끄럼 방지 효과가 있습니다.
- 내구성이 강한 탄성체로 경화되지 않습니다.
- 다양한 종류 중 사양에 맞게 선택할 수 있습니다.

**사양**

- 재질 : 폴리우레탄
- 경도 : 70° ±5°

**용도**

- 컴퓨터, 계측기기, 전기기기 등.

**Features**

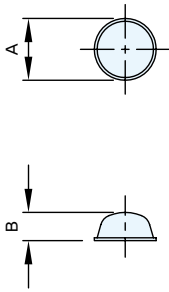
- This product has a high friction coefficient, so it has an anti-slip effect.
- It's not hardened by a durable elastomer.
- Various options to select the desired one based on the specification.

**Specification**

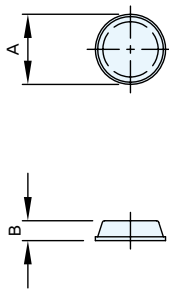
- Materials Used : Polyurethane
- Hardness : 70° ±5°

**Use**

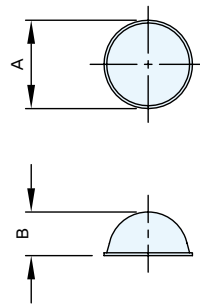
- Computer, Measuring instrument, Electric device, etc.



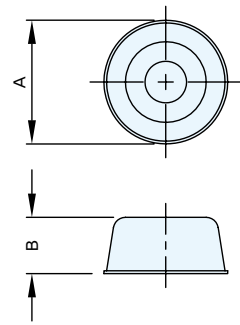
KD-R166-1, 10



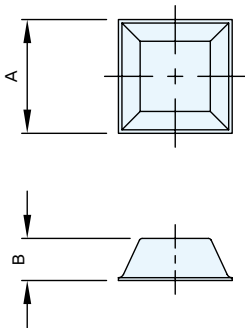
KD-R166-2, 12



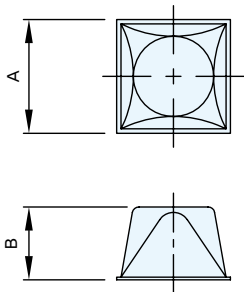
KD-R166-3, 4



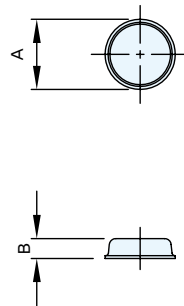
KD-R166-5



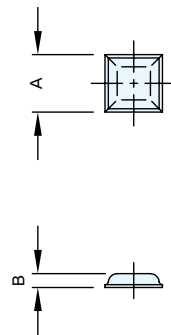
KD-R166-6, 7, 8, 11, 13, 17



KD-R166-9



KD-R166-14



KD-R166-15, 16

	코드번호	A	B	Color	Net weight(g)
<b>KD-R166-1</b>	KD00156	φ11.2	5.1	black	0.5
<b>KD-R166-2</b>	KD00165	φ12.7	3.6	black	0.9
<b>KD-R166-3</b>	KD00166	φ16.0	7.9	black	1.4
<b>KD-R166-4</b>	KD00167	φ19.1	9.7	black	1.8
<b>KD-R166-5</b>	KD00168	φ22.4	10.2	black	2.6
<b>KD-R166-6</b>	KD00169	□12.7	3	black	3.2
<b>KD-R166-7</b>	KD00170	□12.7	5.8	black	4.4
<b>KD-R166-8</b>	KD00171	□20.6	7.6	black	5.0
<b>KD-R166-9</b>	KD00172	□20.6	13.2	black	10.8
<b>KD-R166-10</b>	KD00157	φ11.2	5.1	white	7.4
<b>KD-R166-11</b>	KD00158	□12.7	3	white	10.3
<b>KD-R166-12</b>	KD00159	φ12.7	3.6	white	5.3
<b>KD-R166-13</b>	KD00160	□12.7	5.8	white	9.3
<b>KD-R166-14</b>	KD00161	φ12.7	3.6	black	12.1
<b>KD-R166-15</b>	KD00162	□10.4	2.5	black	11.4
<b>KD-R166-16</b>	KD00163	□32.4	6.4	black	14.9
<b>KD-R166-17</b>	KD00164	□20.6	7.6	white	15.6