



D-13 KD-R118 고무발 - Rubber Foot



특징

- 다양한 종류 중 사양에 맞게 선택할 수 있습니다.

사양

- 재질 : EPDM
- 경도 : 65°±5°
- 색상 : 검정색

용도

- 컴퓨터, 계측기기, 정보통신 장비, 전기기기 등.

Features

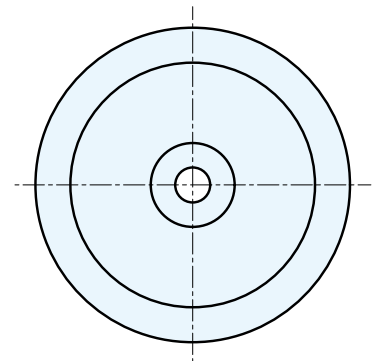
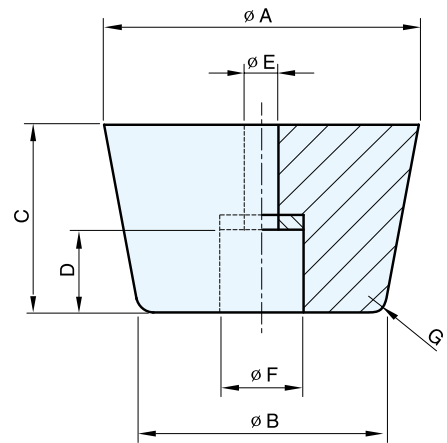
- Various options to select the desired one based on the specification.

Specification

- Materials Used : EPDM
- Hardness : 65°±5°
- Color : Black

Use

- Computer, Measuring instrument, IT equipment, Electric device, etc.



	코드번호	A	B	C	D	E	F	G	Net weight(g)
KD-R118-1	KD00088	10	10	5	3	3	5	1	0.5
KD-R118-2	KD00099	12	8	9	4	3	5	1	0.9
KD-R118-3	KD00107	15	14	8	5	3	6	3.5	1.4
KD-R118-4	KD00108	15	10	10	3	3	5	1.5	1.8
KD-R118-5	KD00109	16	14	10	5	3	6	1	2.6
KD-R118-6	KD00110	18	15	11	7	4	7	1.5	3.2
KD-R118-7	KD00111	20	16	12	7	4	7	1.5	4.4
KD-R118-8	KD00112	20	15	17	8	3	7	1.5	5.0
KD-R118-9	KD00113	22	18	24	11	3	7	1.5	10.8
KD-R118-10	KD00089	23	19	14	5	4	8	1.5	7.4
KD-R118-11	KD00090	23	20	20	10	4	8	2.5	10.3
KD-R118-12	KD00091	24	20	10	5	4	9	1.6	5.3
KD-R118-13	KD00092	26	20	15	10	4	10	1.5	9.3
KD-R118-14	KD00093	28	22	18	11	4	12	2	12.1
KD-R118-15	KD00094	29	24	15	10	4	14	2	11.4
KD-R118-16	KD00095	30	24	19	10	4	14	1.5	14.9
KD-R118-17	KD00096	32	28	15	5	5	14	2	15.6
KD-R118-18	KD00097	32	26	20	10	5	15	2	19.1
KD-R118-19	KD00098	32	28	25	9	5	14	1	25.0
KD-R118-20	KD00100	34	27	18	10	5	17	13	17.2
KD-R118-21	KD00101	36	20	17	9	6	17	13	20.8
KD-R118-22	KD00102	36	30	22	12	5	12	2	27.3
KD-R118-23	KD00103	38	32	24	13	5	12	2	33.5
KD-R118-24	KD00104	40	30	22	9	5	14	3	24.8
KD-R118-25	KD00105	45	35	27	12	5	12	2.5	49.2
KD-R118-26	KD00106	63	48	26	15	7	14	5	95.5