



# E-15 KE-501-1 인터록 스위치 - Interlock switch



- 특징**
- 메인 관리자의 권한으로 키를 보관할수 있어 보안성이 월등합니다.
  - 키의 연동이 가능합니다.
  - 내진 구조입니다.
  - 작동체크용 스위치가 장착되었습니다.

- 사양**
- 재질 : 황동(BsBM)
  - 표면처리 : 크롬 도금(MBCr)
  - 정격: AC250V 2A, DC30V 2A

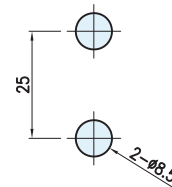
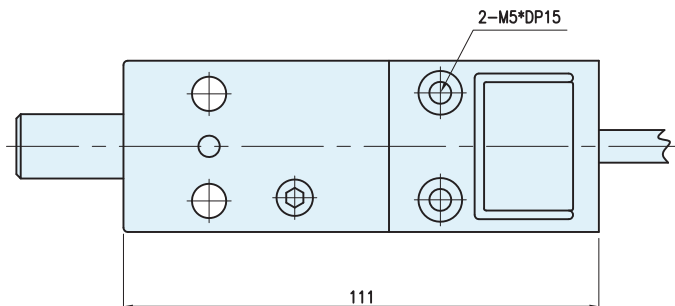
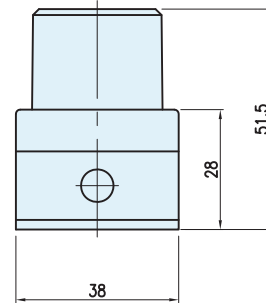
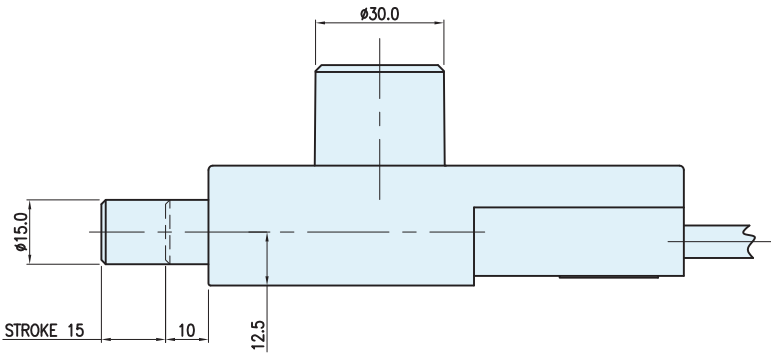
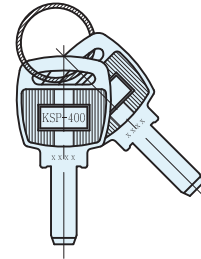
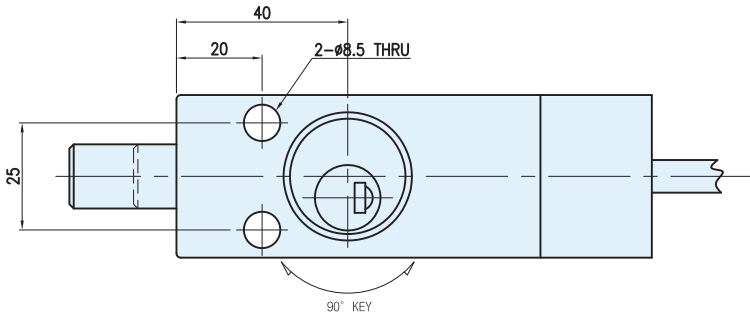
- 용도**
- 수전반, 배전반, 공작기계, 플랜트 등.

- Features**
- Very safe because main administrator can store the keys separately.
  - The key can be interlocking.
  - Earthquake-resistant structure.
  - Mount switch for operation check.

- Specification**
- Material Used : Brass(BsBM)
  - Finish : Chrome plating(MBCr)
  - Voltage : AC250V 2A, DC30V 2A

- Use**
- Incoming pannel, Distributing pannel, Machine tool, Plant, etc.

※ 2구, 3구 등 제작 별도 문의



Panel Drilling Dimensions

CABLE 배선도				
No.	1	2	4	
Color	Black	Red	White	Green
Pin Name	COM	NC	NO	GND
		코드번호		
KE-501-1		KE00103		

Position	SWITCH
A	
B	