



## E-11 KE-410R 솔레노이드 락 - Solenoid Lock



### 특징

- 통전시 잠깁니다.
- 연속 통전을 금합니다.

### 사양

- 정격 전압 : DC24V
- 통전율 : 100% (연속정격-상온시)
- 내전압 : AC1000V : 1분간 (AC1200V : 1초간)
- 사용 주위 온도 : -5~+40°C (빙결하지 않을 것)
- 사용 주위 습도 : 85%RH 이하 (결로하지 않을 것)
- 중량 : 272g

### 용도

- 입실관리기기, 케이스 등.

### Features

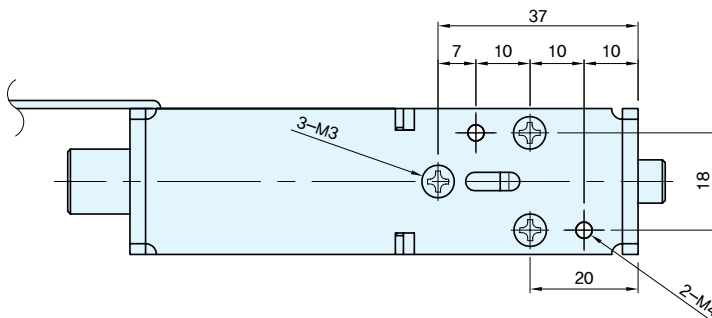
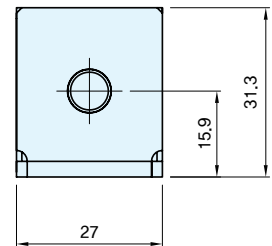
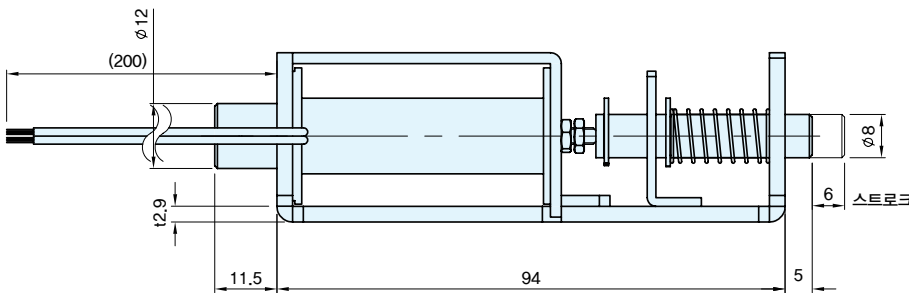
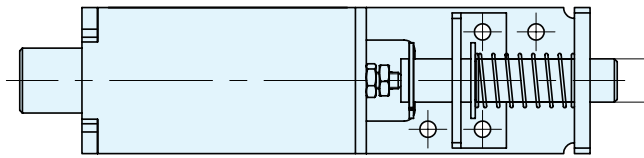
- It's locked when power supply.
- Cannot be used as continuous energization.

### Specification

- Voltage : DC24V
- Conductivity : 100% (continuous rating)
- Dielectric strength : AC1000V : 1Minute (AC1200V : 1Second)
- Ambient Temperature : -5~ +40°C (non-condensing)
- Ambient Humidity : Less than 85%RH (non-dewing)
- Weight : 272g

### Use

- Pass box, Case, etc.



코드번호	
KE-410R-1	KA00874