

H-CL-65 코너 힌지 - Corner Hinge

H-6



- 특징**
- 장착이 용이
 - 좌, 우 겸용

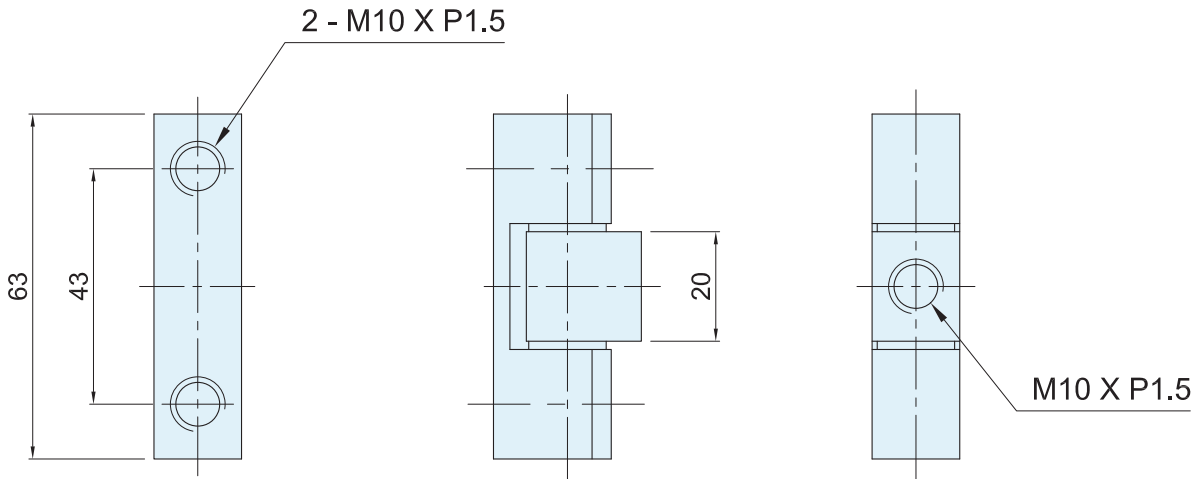
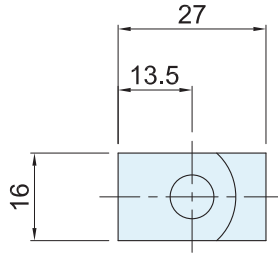
- 사양**
- 재질: 아연 합금
 - 표면처리: 크롬 도금(MZCr)

- 용도**
- 정보통신 장비, 반도체 장비, 시험기기
 - OA기기, 사무기기 등

- Features**
- Easy to mount
 - Use in both of left and right

- Specification**
- Materials Used: Zinc alloy
 - Finish: Chrome plating(MzCr)

- Use**
- Incoming panel, Distributing panel
 - Control panel, Medical instruments
 - Testing apparatus, etc.



	코드번호	Net weight[g]
H-CL-65 CR	B070001	123